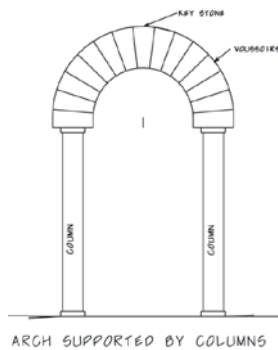
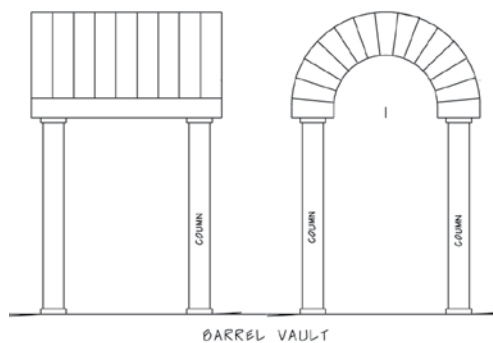


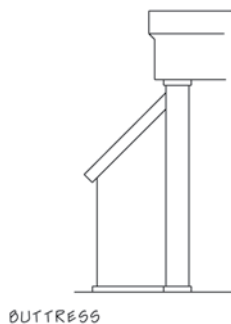
Arch – a curving structure used to span openings in a wall: wedge-shaped pieces (voussoirs) that lean against each other in compression.



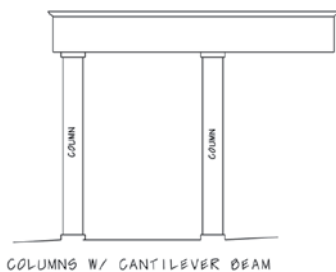
Barrel Vault – a continuous surface of semi-circular or pointed sections; basically a series of arches set side-by-side forming a half cylinder.



Buttress – a small, support wall at a right angle to another wall to counteract the outward thrust of a heavy roof or wall.



Cantilever – a beam supported only at one end.

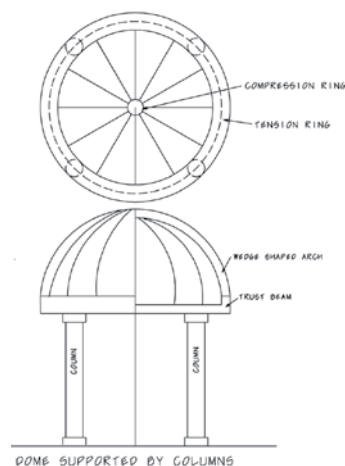


Column – an upright (vertical) support member.

Compression - smashing; pushing together (the opposite of tension).

Compression Ring – a ring holding its shape because its members are in compression, pressing toward each other.

Dome – a three-dimensional form based on a circle, the top of a dome is in compression while the bottom of a dome is in tension.



Flying Buttress – a buttress with a non-structural section removed to give it the appearance of lightness.

Gravity - the force of attraction between two massive objects; commonly understood as the downward pull of the earth that makes objects feel heavy.

Load - weight of something being supported.

Post and Beam – One of the earliest methods of building, it includes any structure built of vertical posts that hold up beams laid horizontally across them.

Curriculum Developed By

Mississippi Heritage Trust

PHYSICAL: 600 East Amite Street, Suite 201

Jackson, MS 39201

MAILING: P.O. Box 577

Jackson, MS 39205

PHONE: 601-354-0200

FAX: 601-354-0220

EMAIL: info@mississippiheritage.com

ONLINE: www.mississippiheritage.com

This project has been made possible with funding from the American Architectural Foundation, the Mississippi Arts Commission and the Mississippi Humanities Council.

Post and Lintel – basic principle used to span openings in a wall to accommodate doors or windows: two vertical posts supporting a horizontal beam (lintel).

Span - the distance between two objects (noun); to cross the distance between two objects (verb).



Stress - the way a material reacts to weight; the two forms of stress are tension and compression.

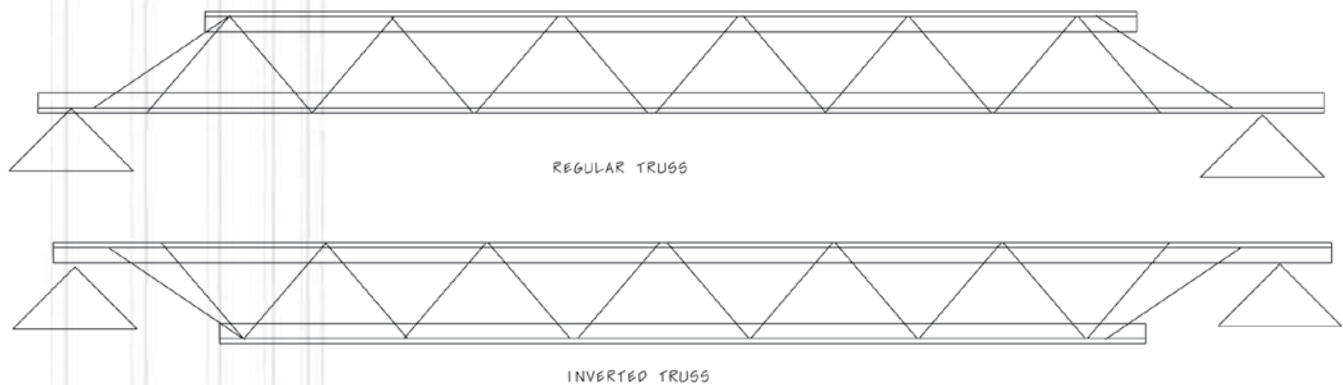
Support - to hold something up.

Tension - stretching; pulling apart (the opposite of compression).

Tension Ring – a ring holding its shape because its members are in tension, pushing away from each other.

Thrust - a strong push in a certain direction.

Truss – a system of support members that are held rigid by utilizing a series of triangles.



Weight – the measurement of the earth's gravitational pull on an object; heaviness.

